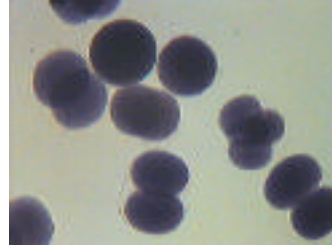


Development

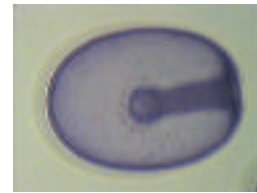
Zygotes divide mitotically



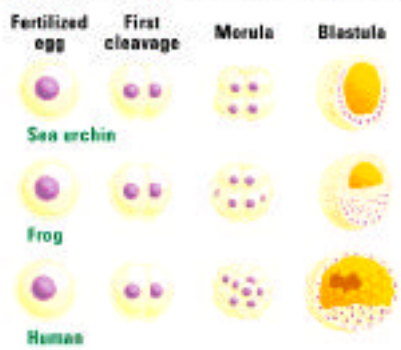
Blastula



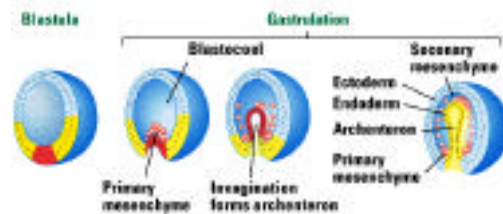
Gastrula



Common development in eumetazoan embryos



Development



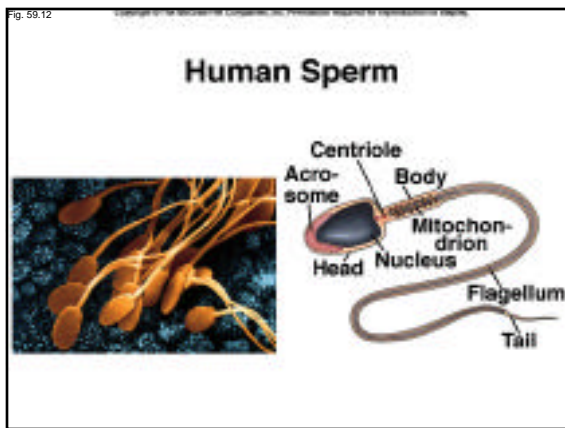
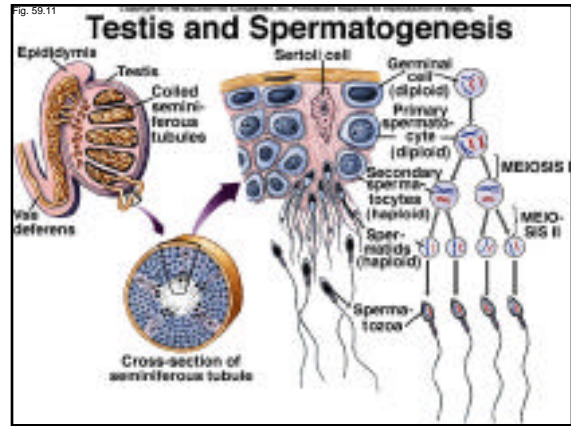
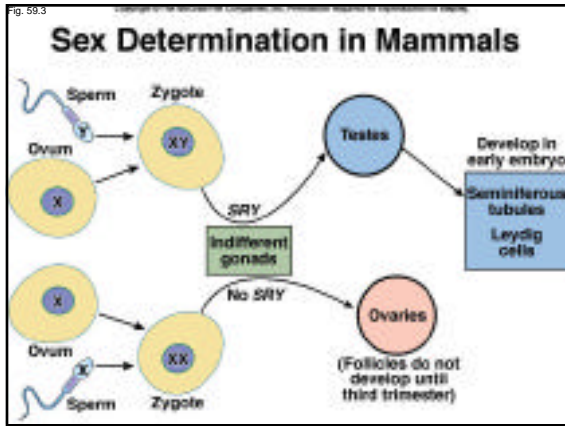
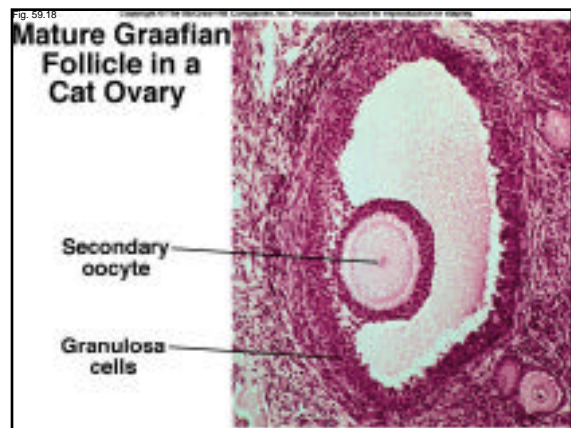
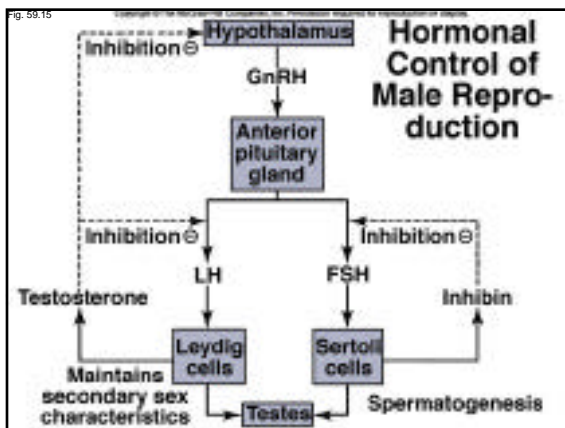
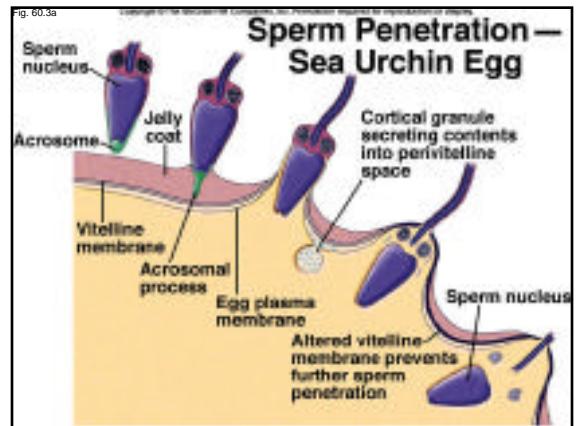
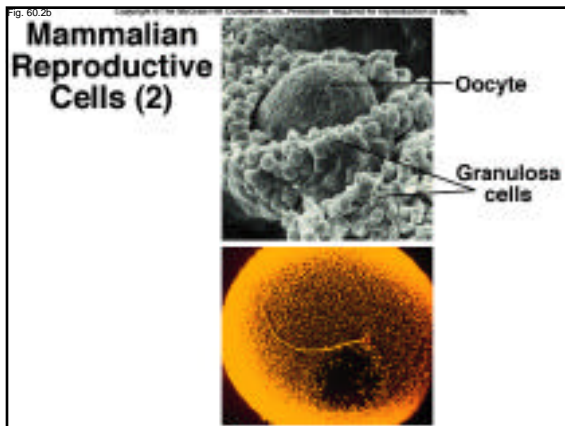
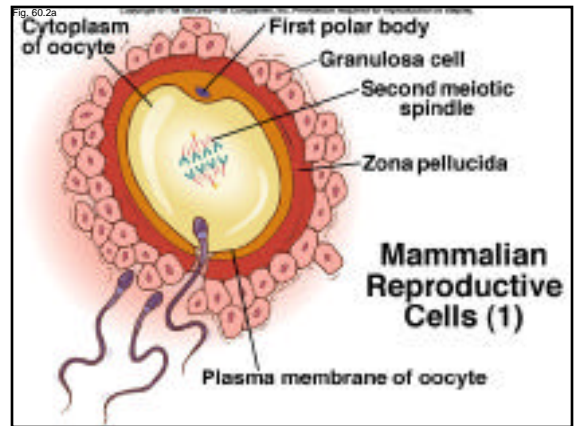
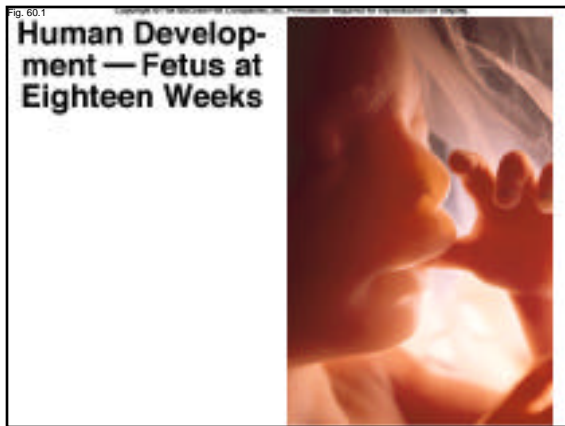
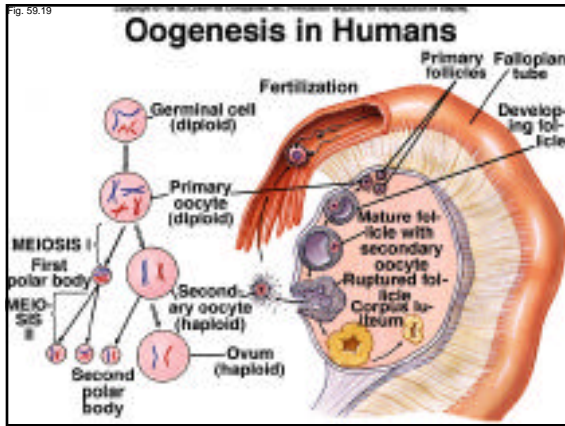
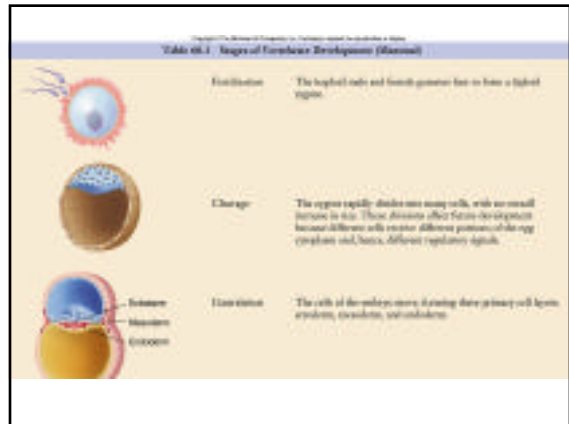
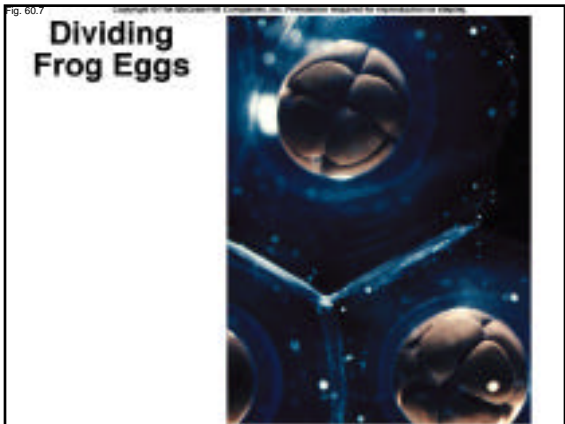
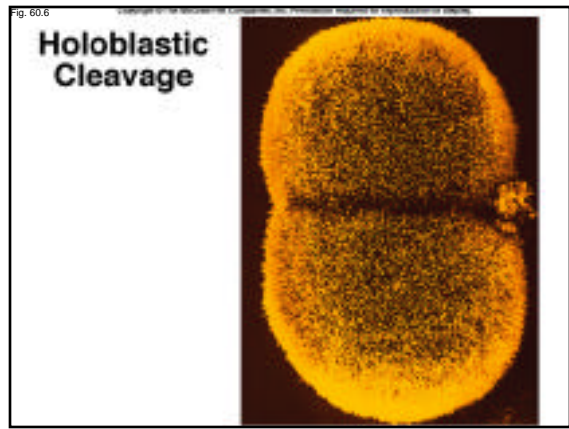
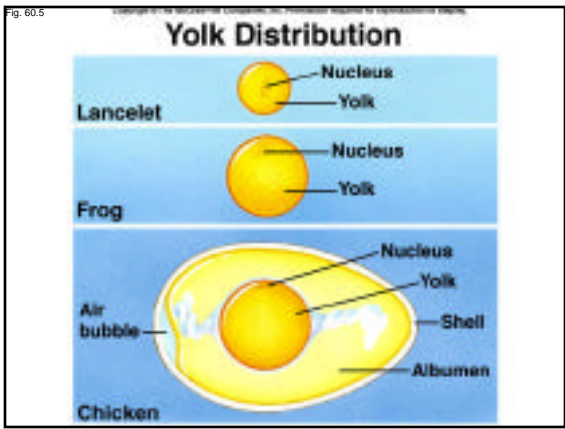
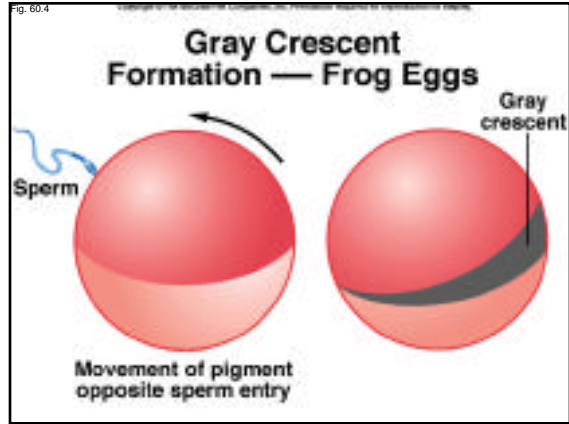
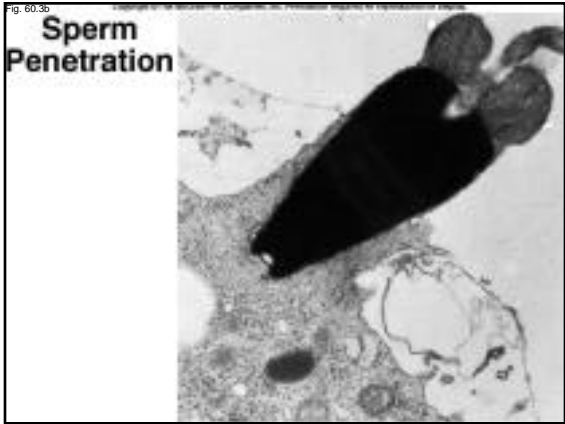


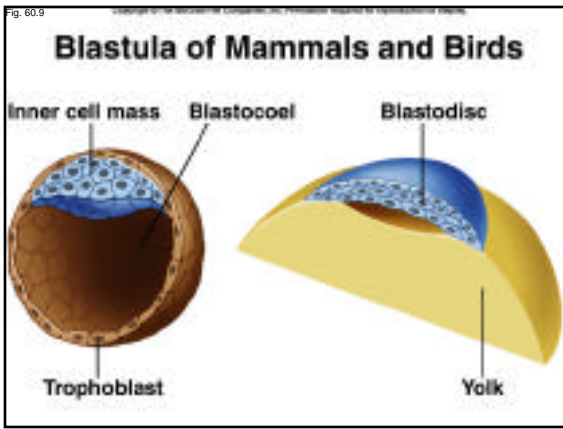
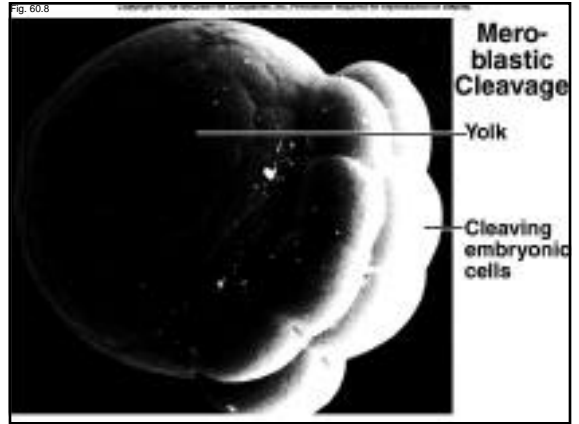
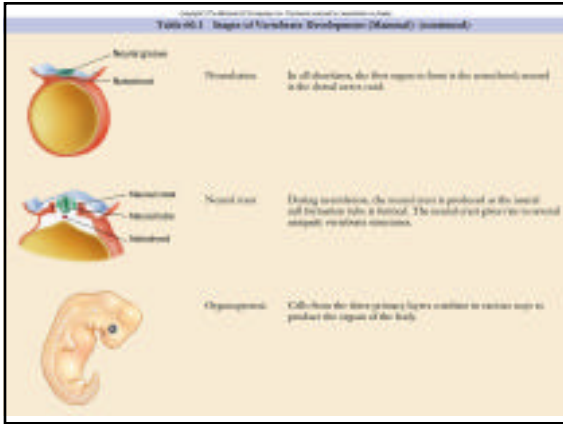
Table 59.1: Mammalian Reproductive Processes

Process	Function
<b>MALE</b>	
Follicle-stimulating hormone (FSH)	Stimulates spermatogenesis
Luteinizing hormone (LH)	Stimulates synthesis of testosterone by Leydig cells
Testosterone	Stimulates development and maintenance of male secondary sexual characteristics and secondary sex organs
<b>FEMALE</b>	
Follicle-stimulating hormone (FSH)	Stimulates growth of new follicles and secretion of estradiol
Luteinizing hormone (LH)	Stimulates maturation, ovulation of oocytes, and formation of corpus luteum
Progesterone	Stimulates development and maintenance of female secondary sexual characteristics; promotes monthly preparation of uterus for pregnancy
Estrogen	Complex preparation of uterus for pregnancy; helps maintain female secondary sexual characteristics
Ovarian androgens	Stimulates synthesis of sperm and cell division effect
Androgens	Stimulates cell production



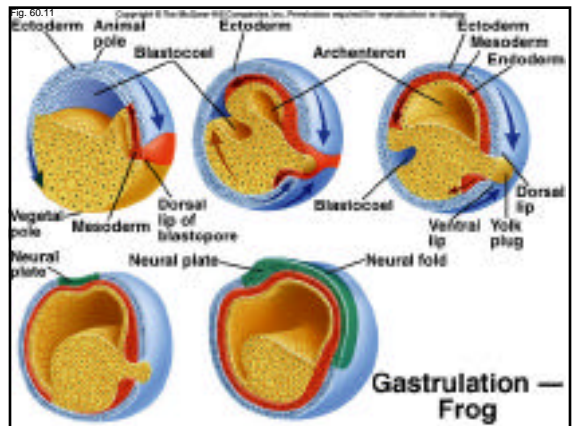
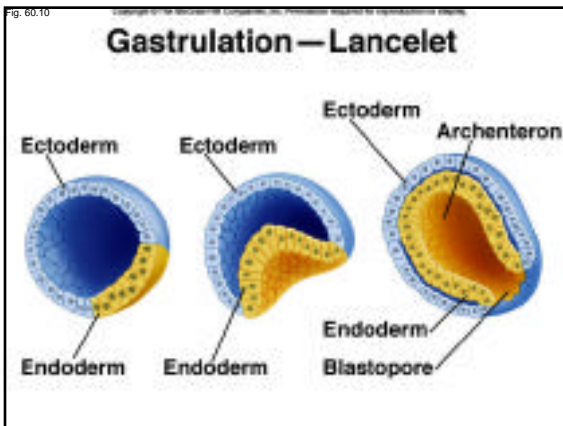


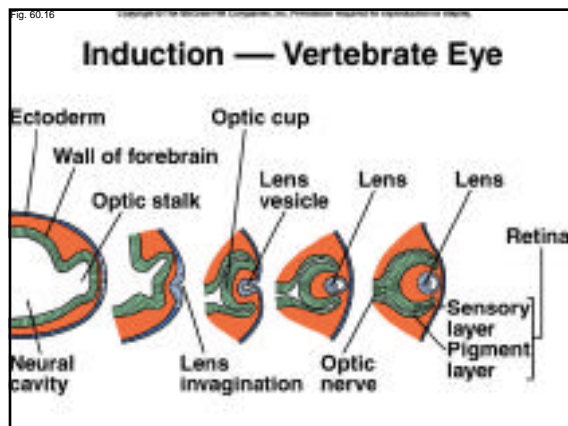
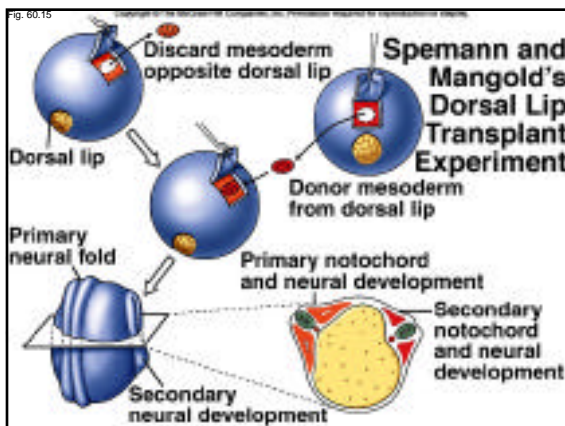
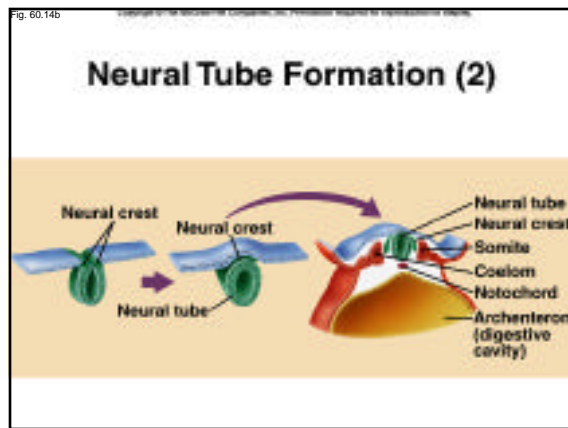
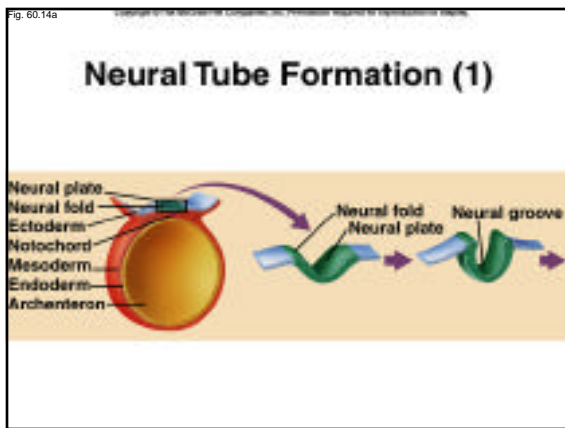
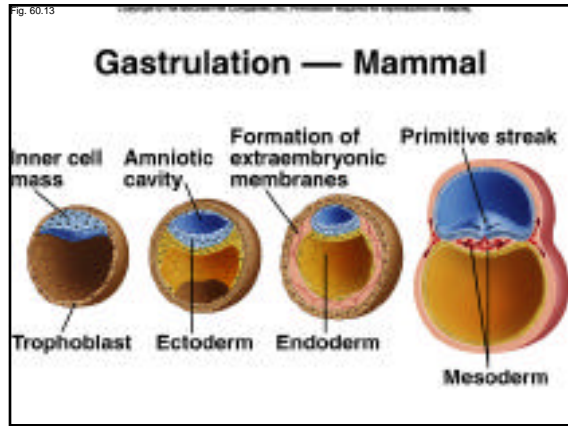
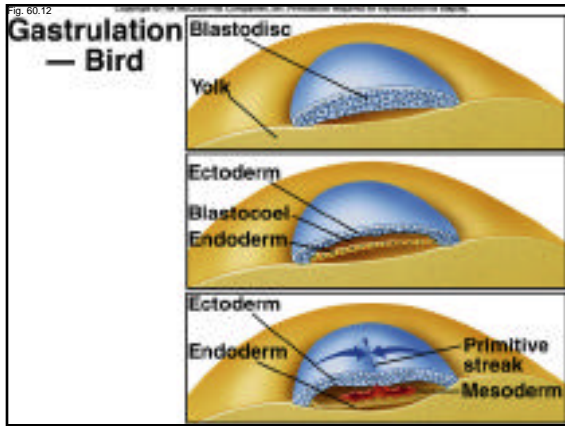


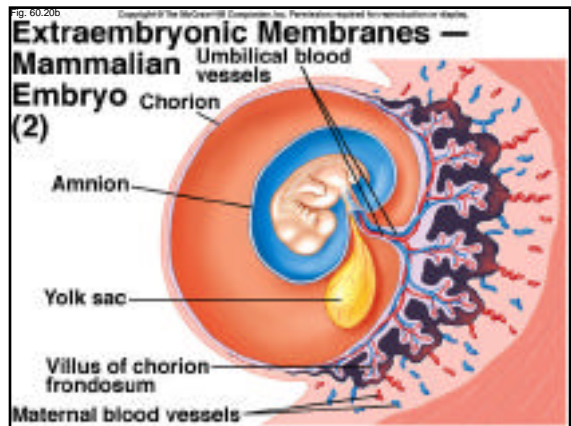
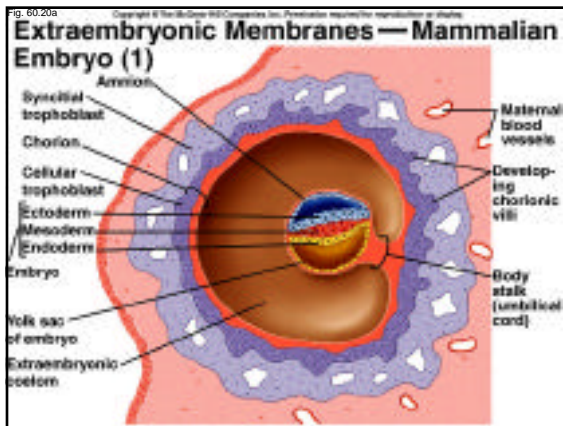
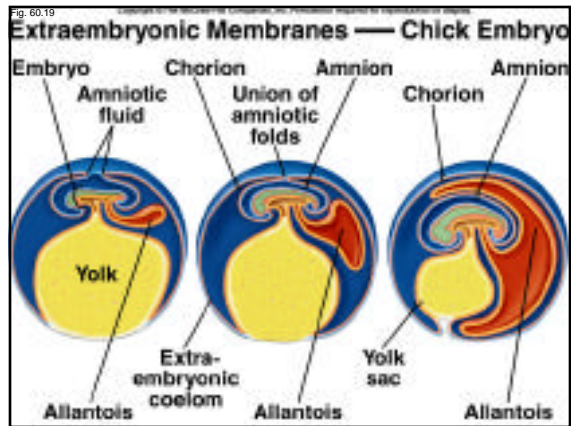
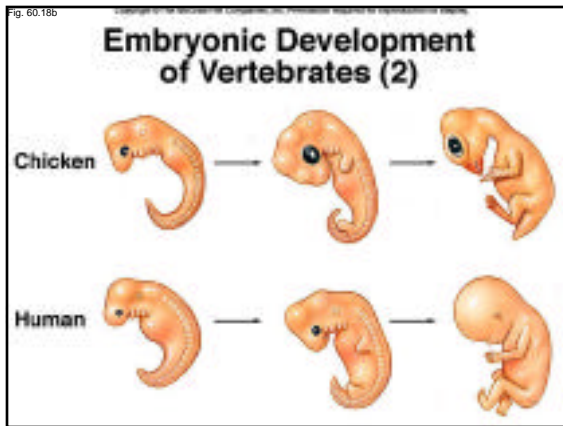
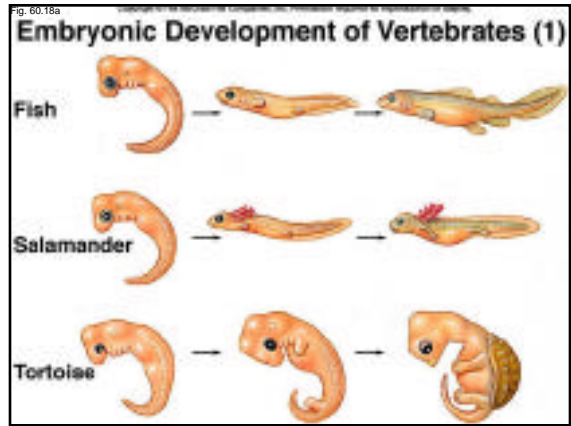
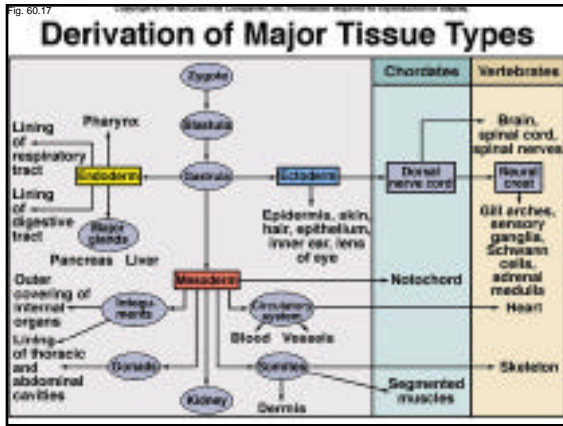


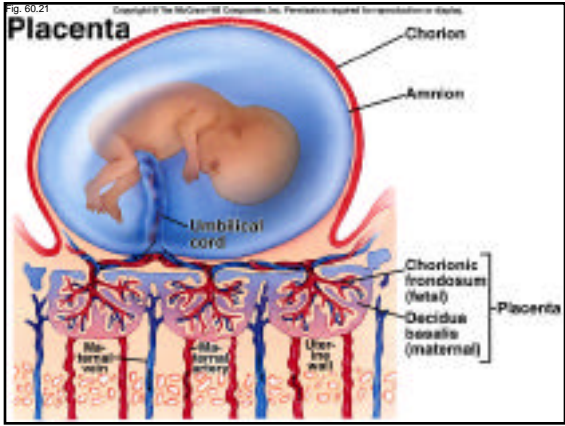
**Table 60.2 Developmental Fates of the Primary Cell Layers**

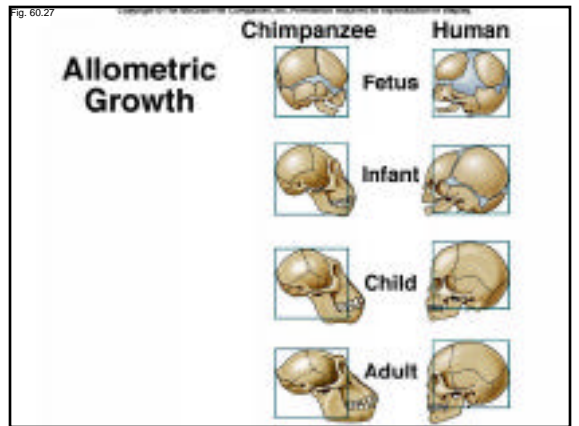
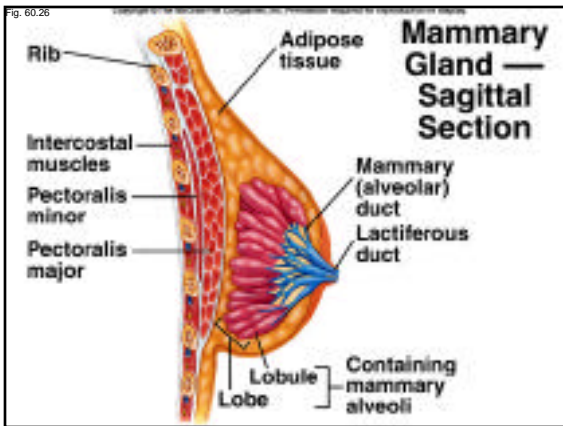
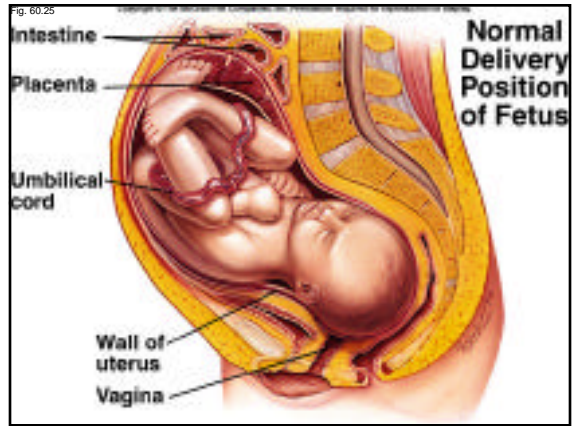
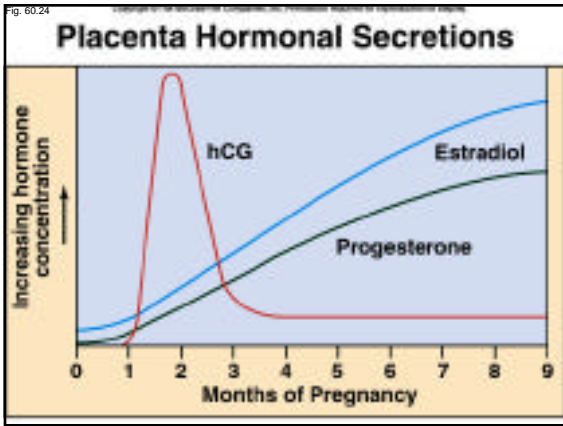
<b>Ectoderm</b>	Epidermis, central nervous system, sense organs, neural crest
<b>Mesoderm</b>	Skeleton, muscles, blood vessels, heart, gonads
<b>Endoderm</b>	Lining of digestive and respiratory tracts; liver, pancreas











The End.