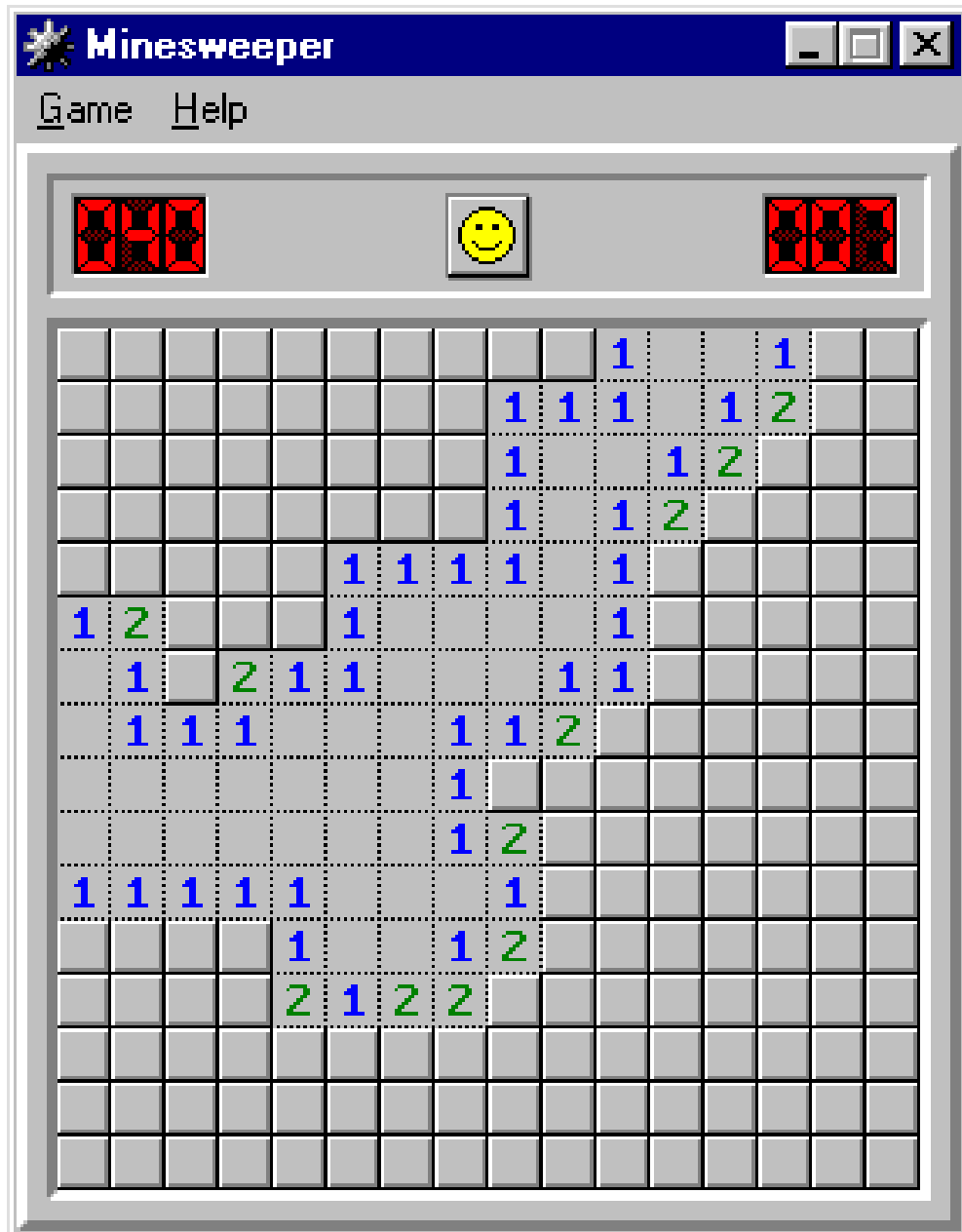


Minesweeper: Practice in Elimination

January 3, 2014

Name: _____ Period: _____

- In the Minesweeper game below, identify the uncovered squares which must be mines with a FLAG and the uncovered squares which must **NOT** be mines with an X. (HINT: There are 12 regular mines, 2 advanced mines, 20 regular X's, and 7 advanced X's.)



2. In the Minesweeper game below, identify the uncovered squares which must be mines with a check and the uncovered squares which must **NOT** be mines with an X. (HINT: There are 10 regular mines, 0 advanced mines, 7 regular X's, and 1 advanced X's.)

The screenshot shows a Minesweeper game window with the following details:

- Window Title: Minesweeper
- Menu: Game Help
- Top Left Counter: 010
- Top Center: Smiley face icon
- Top Right Counter: 103
- Grid: 15x15 cells with numbers and flags.

The grid contains the following numbers and flags (row by row):

		1		2	1	2							1	1
		2	1	3	1	2			1	2	2	1	1	1
1	1	2	1	3	2	2			1	1	1	1	1	1
		1	1	2	1	1			1	2	2	1		
1	1			1	1	1			1	1	1			
1	1								1	1	1	1	1	1
2	3	1	1	1	1	2	1	1		1	1	1	2	1
1	3	1	1	1	1	3	1	2	1	1		1	4	1
1	3	1	1	2	3		3	3	1	1		1	1	1
1	1			2	1			3	1	1		1	3	
	1	2	2	3	1	4		2		1	1	2	1	2
	1	1	1	2	1	2	2	2	1	1			2	1
	2	4	4	3	1	1	1	1	1	1	1	2	1	1
	1	1	1	3	1	1	1	1	1					
	1	2	3	1	4	3	1	1	2	2	1	1	1	1
		1	2	1	1	1	1							1