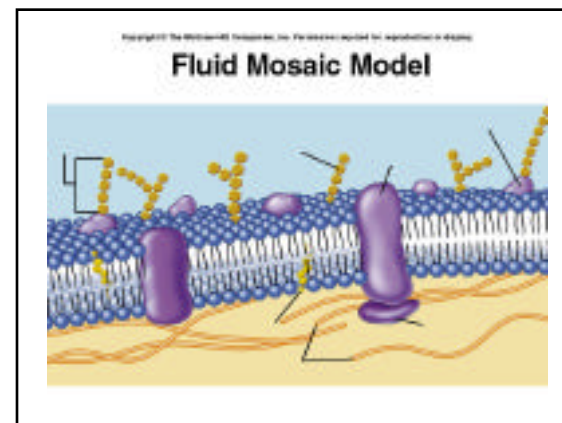
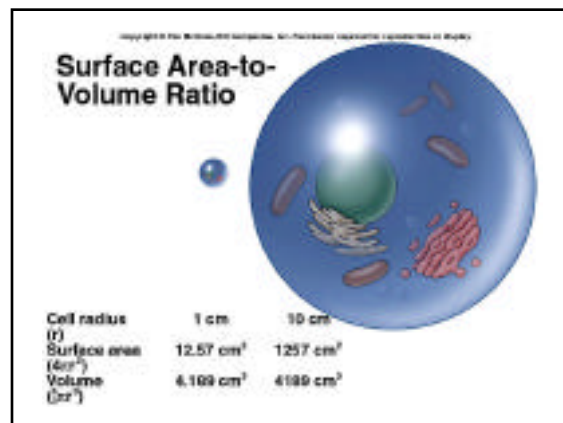
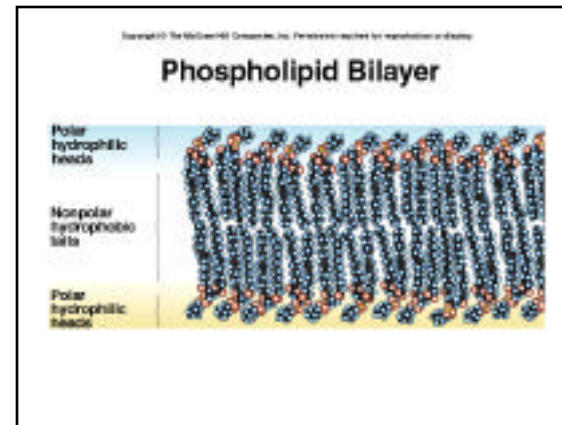
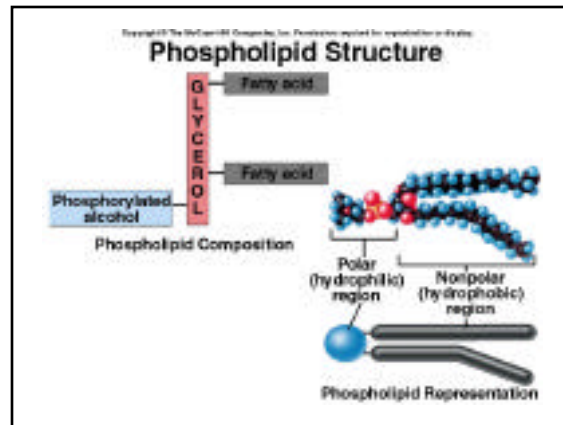


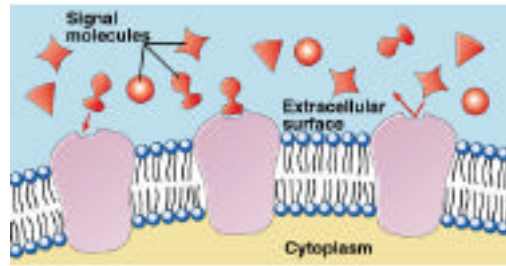
## Membranes

## Plasma membrane

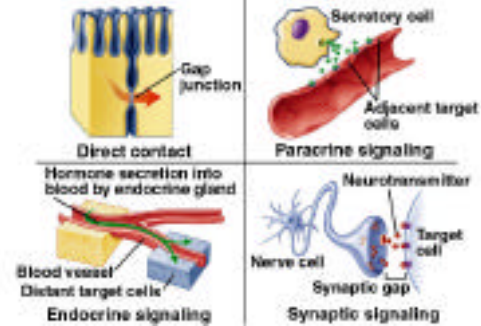
- ✓ Regulation of movement of materials in and out of the cell
- ✓ Receives and translates chemical and environmental signals from outside of the cell.



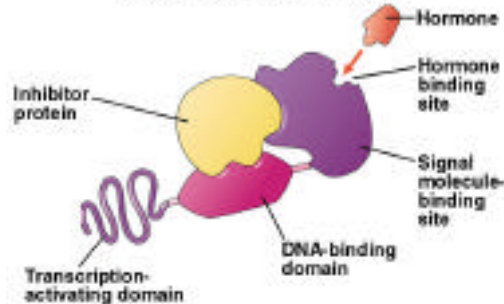
### Receptor Proteins



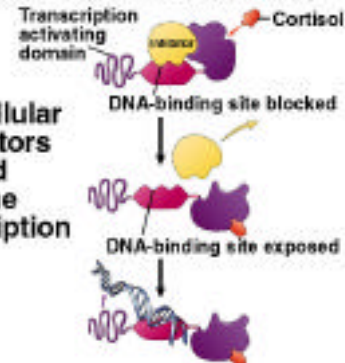
### Types of Cell Signaling



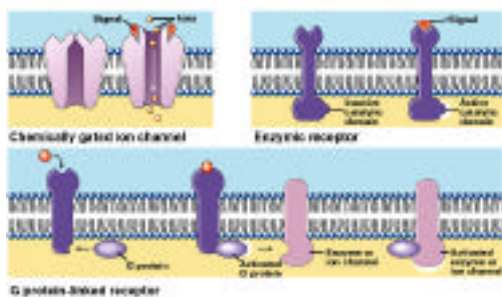
### Intracellular Receptor



### Intracellular Receptors and Gene Transcription



### Cell Surface Receptors



### G Protein-Linked Receptor

